

State of Wyoming Corner Record

(In compliance with the **CORNER PERPETUATION AND FILING ACT**, Wyoming Statutes, 1997 Section 33-29-140 et. seq., and the Rules and Regulations of the Board of Professional Engineers and Professional Land Surveyors)

Reverse side of this form may be used if more space is needed.

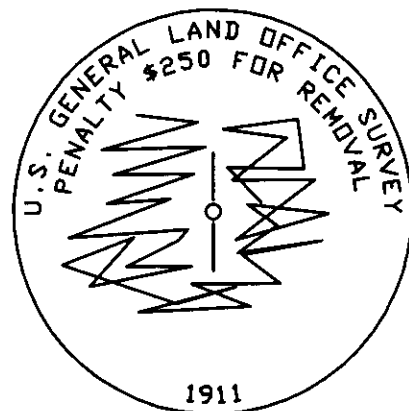
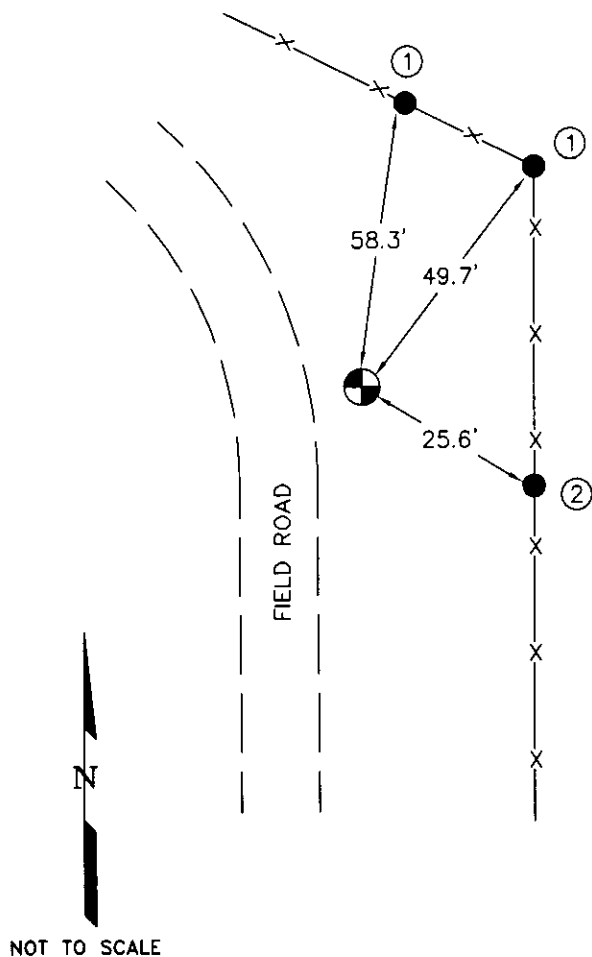
Record of original survey and citation of source of historical information (if corner is lost or obliterated). Description of corner monumentation evidence found and/or monument and accessories established to perpetuate the location of this corner. Sketch of relative location of monument, accessories, and reference points with course and distance to adjacent corner(s) (if determined in this survey). Method and rationale for reestablishment of lost or obliterated corner.

GLO RECORD: SET AN IRON POST, 3 FT. LONG, 1 INCH DIAM., 2 1/2 FT. IN THE GROUND, FOR 1/4 SEC. COR., AND MARK ON THE BRASS CAP ON THE POST.

MONUMENT FOUND: FOUND 1" PIPE WITH 2 1/2" BRASS CAP STAMPED U.S. GLO 1911 AS SHOWN BELOW, MONUMENT WAS RECOVERED 1.4' BELOW GROUND SURFACE LEANING NORTH.

MONUMENT SET: NONE.

REFERENCES: SET REFERENCE TIES AS SHOWN IN SKETCH BELOW.



Found Monument Inscription

- ① SET DUPLEX NAIL AND BOTTLE CAP IN NW FACE OF FENCE POST.
- ② SET DUPLEX NAIL AND BOTTLE CAP IN SW FACE OF FENCE POST.

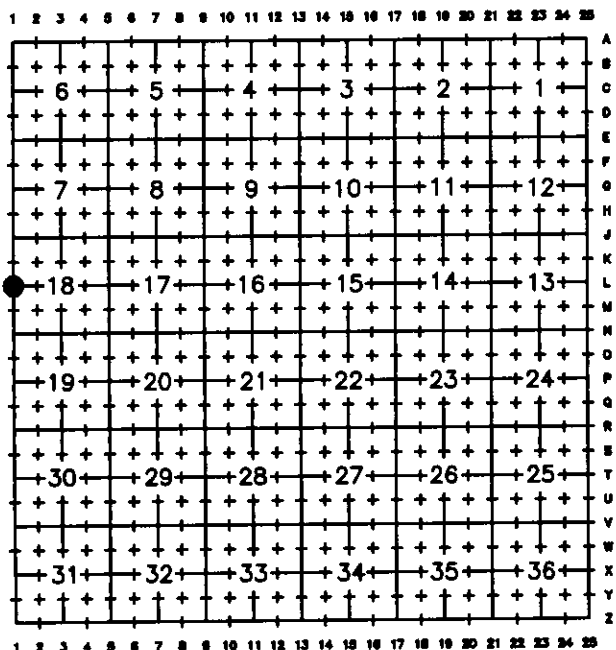
RECORDED 7/13/2010 AT 8:22 AM REC# 548553 X# 2173 PG# 431
DEBRA K. LATHROP, CLERK OF LARAMIE COUNTY, WY PAGE 1 OF 1

L 10-13

Date of Field Work: 6/7/10

Office Reference: 2010022 (LAT40)

Cross Index Plat



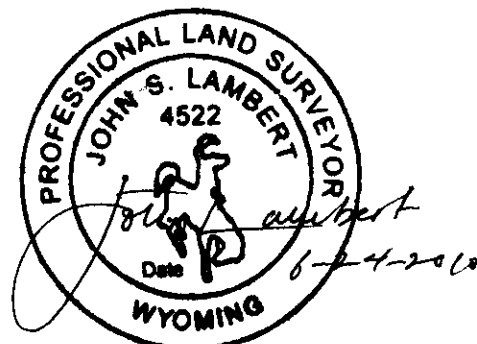
Firm/Agency, Address

Lambert Land Consulting, LLC
417 South Whitcomb Street
Fort Collins, Colorado 80521

Telephone Number: 970-217-2190

This corner record was prepared by me or under my direction and supervision.

SEAL & SIGNATURE



Corner Name WEST 1/4 Corner Section 18, T 12 N, R 62 W, 6th P.M.

Cross-Index No.: L-1